



Early Head Start

Annual Report 2020-2021

Child Care Resources Awarded Five Year, \$9.5 Million Federal Early Head Start - Child Care Partnership Grant

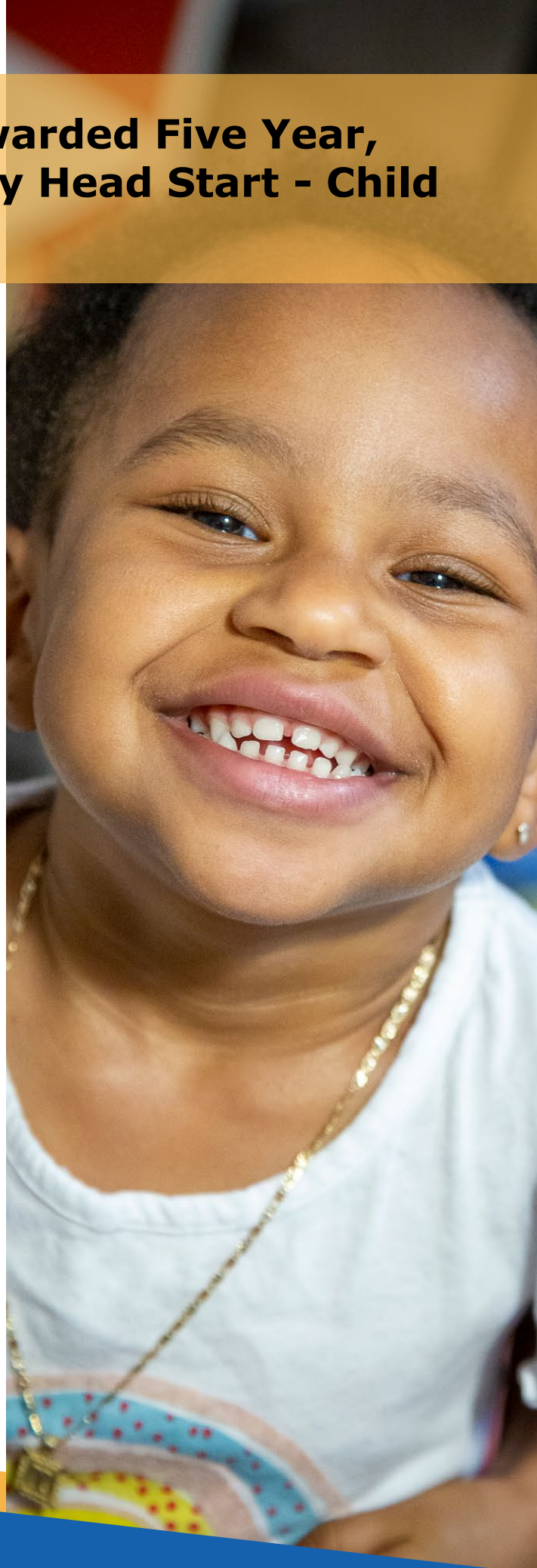
Spring 2021

The Administration for Children and Families (ACF) awarded new Early Head Start-Child Care (EHS-CC) Partnership and Early Head Start Expansion funds to 62 agencies in 32 states and Puerto Rico. The grants provide EHS services encompassing early learning and development, health, and family well-being to 5,100 infants and toddlers and their families. **For the first time in over ten years, this grant was awarded in Western Washington and it is the first federal grant for Child Care Resources to hold directly.**

Early Head Start (EHS) programs promote the physical, cognitive, social, and emotional development of infants and toddlers through safe and developmentally-enriching caregiving. They support families, including mothers, fathers, and other adults, in their role as primary caregivers and teachers of their children. Programs also assist families in meeting their own personal goals and achieving self-sufficiency across a wide variety of domains, such as housing stability, continued education, and financial security.

EHS programs recruit families with the greatest need. Eligibility is generally based on family income being at or below the poverty level. Children in foster care, children experiencing homelessness, and children from families receiving public assistance such as Temporary Assistance for Needy Families (TANF) or Supplemental Security Income (SSI) are eligible regardless of income.

EHS-CC Partnerships are collaborations with local child care providers to enhance services for low-income working families. This is accomplished through comprehensive services, access to full-day/full-year care, and preparing children for the transition into preschool.



A Note from Phoebe Sade

Dear CCR Community,

It is with great joy that I craft this letter. In August of 2020, we learned about the opportunity to apply for the Early Head Start Child Care Partnership Grant through a partner organization. We were months behind in preparing a significant federal application, yet when the idea was presented to a group of CCR staff, the response was "Let's Do It!" Over the course of three weeks, two dozen CCR staff spent countless hours, nights and weekends building and bringing to life a model of high quality early learning that honored the power of family child care programs and highlighted the



tenets of Early Head Start. This new model would allow us to bridge key CCR programs and expertise in a way that we have never done before: coaching, training, mental health consultation, and family support - all in one place!

When we received news that our application was successful, we were overwhelmed with excitement, disbelief and pride. *We had done it!* For CCR, this success enabled us to stretch and grow into an area we had never gone, but had hoped to, and to leverage our thirty years of skills, experience and passion for and with our child care communities in King and Pierce Counties.

We are proud of our inaugural EHS-CCP program because it aligns and represents our mission and values so beautifully. CCR is focused on improving the early learning experiences of all children, especially black and brown children and those furthest from educational justice. Our work is centered in community and collaboration and it's all about child well-being.

We have learned so much in the last ten months of planning and implementation. With each child enrolled, you can hear a cheer from CCR staff! We are thrilled to share our work with the community and invite you all to follow along with us as we continue to learn, develop and honor children through this extraordinary work.

With gratitude and pride,

Phoebe Sade, CEO

EHS-CCP at a Glance

FIVE YEAR GOALS

#1 CCR's EHS-CCP program will develop stable ecosystem to allow for consistent, responsive & equitable FCC partner support for the benefit of children, families and communities.

#2 CCR's EHS-CCP program will create and sustain an environment, structure and support that encourages wellness, fulfillment and professional growth resulting in staff engagement and retention.

#3 CCR's EHS-CCP program will collaboratively co-create with families on program design and implementation so that the ecosystem of the EHS-CCP program is one that honors families as the experts of their children, integrates them as integral collaborators in program leadership and direction, and fosters a culture of shared leadership and mutual support.

BY THE NUMBERS

Project period: March 2021 - February 2026

14 Family Child Care Partners

7 person EHS-CCP program staff team

72 children and families served

*11 children enrolled since start of program operation in September 2021

\$2,404,121 annual budget

*\$1,923,297 federally awarded with an approved cost sharing provided by CCR



Why South King & Pierce Counties?

Over the past two decades there has been an exponential increase in immigration and refugee resettlement, especially south of Seattle in Federal Way and surrounding areas. This increase results in approximately 40% of families speaking a language other than English at home, representing over 170 different languages. Additionally, in our target areas:

- Unemployment is high at 10.5% during COVID-19 in South King County
- 60% of students enrolled in Tacoma Public Schools are students of color & 58% of enrolled students live in poverty
- Infant mortality in Federal Way is 9.3/1000 live births; Pierce County is 4.9/1000 live births
- In a recent King County Best Starts For Health annual survey, 269 families in South King County indicated that their infant or toddler needed mental health supports